



# **Grand Junction Field Office**

## **Resource Management Plan (RMP)**

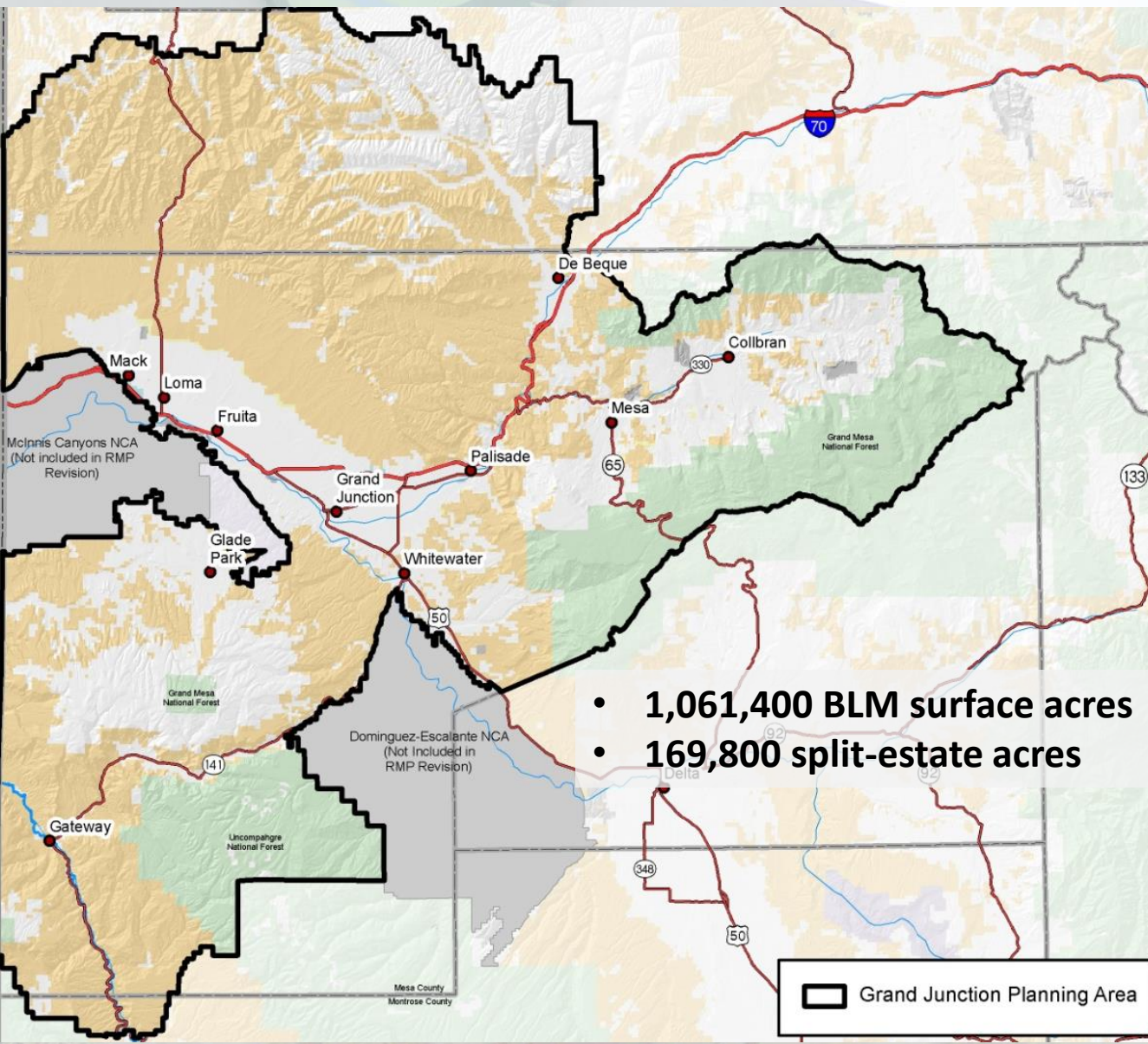
**Revision Currently underway**

**Will Guide Management of BLM Lands  
and federal minerals for next 20 years**





# Planning Area



**BLM Mission:**  
**To maintain  
the health,  
diversity, and  
productivity of  
the public  
lands for the  
use and  
enjoyment of  
present and  
future  
generations.**



# Planning Process

## Why are we here?

- Land use plans, or RMPs, are required by Federal Land Policy and Management Act (FLMPA) of 1976
- RMPs are expected to be revised every 20 years
- Revising the 1987 Grand Junction RMP (as amended 13 times since 1987)
- Draft Environmental Impact Statement
- Open Public Process – we need your review and comments





## Grand Junction Field Office Resource Management Plan Revision

# Planning Process

2009 Public Scoping comment period (90 days)



Develop Draft RMP/EIS with scoping input and participation from Local Cooperating agencies (county, cities, state, Fed)



**We are here** Draft RMP/EIS 90 day public comment period – ends April 25, 2013



Use comments to help prepare Proposed RMP/Final EIS



Proposed RMP/Final EIS Public Review and Protest period - 30 days (Early 2014)



Prepare Record of Decision (ROD) and Approved RMP (Late 2014)



# Community Involvement

## Scoping 2008-2009

- 90 day comment period
- 3 Open Houses
- 6 Travel Management Workshops
- 2 Travel Management comment periods



## Cooperating Agencies (20 meetings 2009-2012)

- Mesa County, Cities of GJ & Fruita; Towns of Palisade, Collbran, De Beque, CPW, CDNR, CO River District, BOR, USFS, USFWS

## Resource Advisory Council Subcommittee (11 meetings 2008-2011)

- User Representatives from Business, Sportsmen, Energy, Grazing, Hiking, Cultural, Motorized, Mountain Biking, Environmental



# Community Involvement

**Community Assessment, visitor surveys, and focus groups**  
Contracted through Colorado Mesa University



**Lower Colorado River Wild and Scenic Stakeholder Collaborative**

Stakeholders made recommendations on how to manage outstanding stream segments

**Draft RMP public comment period** January 25-April 25, 2013 (Now!)

**Proposed RMP public review** and Protest period/Governor's review (next winter)





# RMP Public Scoping

- Major Issues
  - Recreation/travel management
  - Mineral Development







# RMP Resource Allocations



- Open/closed to oil & gas, coal, sand/gravel, development – what stipulations?
- Recreation management, travel management
- Special Status Species protections
- Municipal watersheds
- Open/closed to livestock grazing
- Wild horses
- Wilderness characteristics
- Visual Resources
- Cultural Resources
- Big game winter range
- Etc.....







# Alternatives

## 4 Alternative Management Scenarios Analyzed

**A: No-Action Alternative (1987 RMP as amended)**

**B: Balanced (Preferred)**

**C: Resource Protection/Conservation**

**D: Resource Use/Development**





# Valid Existing Rights



New RMP stips do not apply to valid existing rights

- 690,100 acres currently leased of 962,000 acres available for Oil and Gas (820 active leases)
- 698 wells drilled to date; 39 wells – most ever drilled in 1 year (2007)
- 1 idle coal mine
- two active commercial sand and gravel operations
- Mining claims





# Energy and Minerals



- **Leasable minerals** - oil and gas, coal, oil shale, humate, uranium, and potash
- **Locatable minerals** - uranium, vanadium, gold, alabaster/gypsum, copper, silver, tungsten, gem minerals (amethyst, fluorite), limestone, and zeolite. Locatable minerals can be located and claimed under the Mining Act of 1872.
- **Mineral materials** include sand and gravel, limestone aggregate, building stone, moss rock, cinders (clinker), clay, decorative rock, and petrified wood. Mineral materials are sold or permitted under the Mineral Materials Sale Act of 1947.
- **Renewable energy** resources include wind, solar, biomass, and hydropower.



# **Fluid Minerals**

## **Reasonably Foreseeable Development Scenario**

**RFD – Assumption for Analysis: Up to 3,900 federal gas wells could be drilled during the planning period**

- **Approx. 1½ conventional/directional wells**
- **Approx. 1½ horizontal/shale wells**

**Analysis also considers:**

- **39 federal wells was all time high (2006)**
- **220 federal wells drilled over the past 20 years (1992-2011)**
- **RFD projected approx. 5,700 fee wells over next 20 years**

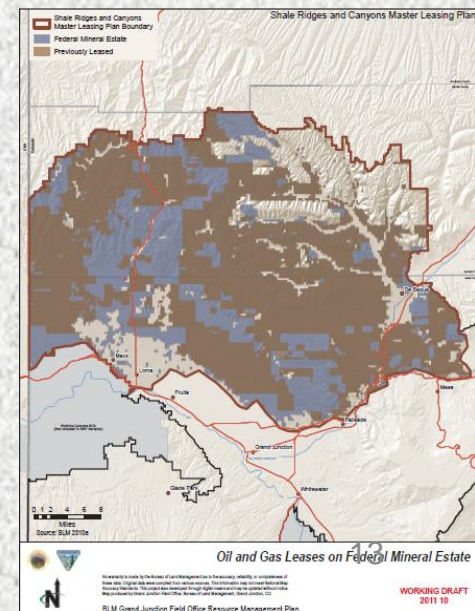




# Fluid Minerals



- **Assumption: Analyzed effects of range from 11 wells/yr (average over past 20 years) to 197 wells/yr (RFD)**
- **Master Leasing Plan Analysis**
- **Oil Shale Decisions would not be changed (560 acres)**
- **Air modeling would be completed at regional and project scales after ROD**



WORKING DRAFT  
2011.10



# Fluid Minerals

## Key Allocations

Alternative	A Current Mgt	B Preferred	C Conservation	D Development
<b><u>CLOSED</u> to fluid mineral leasing</b>	96,500	202,400	623,600	100,500
<b><u>OPEN</u> to fluid mineral leasing</b>	1,134,600	1,028,800	607,600	1,130,700
<b>Open with NSO Stips</b>	433,000	429,100	302,900	400,900
<b>Open with CSU Stips</b>	74,100	563,500	326,800	445,800
<b>Open with TL Stips</b>	233,000	401,600	241,600	438,700

***Stipulations overlap in places – so columns are not additive***





# Key Allocations – Coal

Alternative	A	B	C	D
<b>Acres Unacceptable for Coal Leasing and Development</b>	<b>36,700</b>	<b>56,000</b>	<b>58,200</b>	<b>43,800</b>
<b>Acres Acceptable for Coal Leasing and Development</b>	<b>300,700</b>	<b>253,400</b>	<b>251,200</b>	<b>265,600</b>

Under B:

Entire coal potential area is open except:

- WSAs
- Colorado River corridor
- municipal watersheds

Added an exception to Steep Slopes NSO for coal exploration and development





## Key Allocations – Renewable Energy



<b>Alternative</b>	<b>A (Current RMP)</b>	<b>B (preferred)</b>	<b>C</b>	<b>D</b>
<b>Solar Energy Zones (&gt;20mw)</b>	<b>NA</b>	<b>9,200</b>	<b>0</b>	<b>9,200</b>
<b>Solar Emphasis Areas</b>	<b>NA</b>	<b>12,000</b>	<b>5,300</b>	<b>36,300</b>
<b>Wind Emphasis Areas</b>	<b>NA</b>	<b>2,600</b>	<b>2,600</b>	<b>3,700</b>





# Sage Grouse

- **GJFO has both Greater sage grouse (23,100 acres) and Gunnison sage grouse (22,600 acres) habitat**
- **GJFO Draft RMP/EIS has adopted latest SG habitat map**
  - Released in March 2012
  - Allocations and impact analysis based on preliminary priority and general habitat
- **NTT alternative is considered but not analyzed in detail**
  - GJFO Draft RMP/EIS has incorporated some new conservation measures from the NTT report
- **Northwest Colorado District preparing RMP amendment**
  - Will analyze remaining NTT measures
  - Would amend new GJFO RMP



# Travel Management

- Why are we doing this? Foundation: Executive Order 11644 (1972) as amended in 1977 (Exec. Ord. 11989)
  - “An estimated 5 million off-road recreational vehicles...are in use in the United States today, and their popularity continues to increase rapidly. The widespread use of such vehicles on the public lands--often for legitimate purposes but also in frequent conflict with....land and resource management practices, environmental values, and other types of recreational activity--has demonstrated the need for a unified Federal policy toward the use of such vehicles on the public lands.”
- Background:
  - Required to look at each road and trail in our office, at the time of the land use plan (if possible).
  - Additional key resource : 43 Code of Federal Regulations 8340





# Types of Decisions: Areas

- **Open Areas**

- An area where all types of travel are permitted at all times
  - Example: Grand Valley OHV Area
- Must be manageable in size, defined, meet recreation objectives, and cause minimal concern for natural resources

- **Closed Areas**

- An area where one or more types of travel may be prohibited
  - Example: Wilderness Study Areas closed to motorized/mechanized travel

- **Areas Limited to Designated Routes**

- Areas where travel takes place on roads or trails
- Example: Bangs Canyon SRMA (includes Lunch Loops)





# Process-which routes stay open

- **Interdisciplinary team of specialists looked at each route for:**
  - Sustainability-also access for public needs and experiences;
  - Potential effects to natural and cultural resources and settings
    - e.g., Cultural resources
    - e.g., Deer or elk winter range
    - e.g., Soil and water: selenium, salinity, dust, water quality degradation
  - Safety
  - Conflicts among the various users of public lands
- Cooperating Agencies participated in this process





# Common Factors

- County roads remain open in all alternatives, as well as roads with a county interest (roads county told us that are important for access)
- Closed or Administrative Only:
  - Spur routes, dead-end routes and duplicate routes
  - Routes on BLM with limited or no public access (until we gain access)
  - Administrative: primarily for access to grazing or energy developments. Limited to the season needed for those uses. Not used here for Special Recreation Permits.



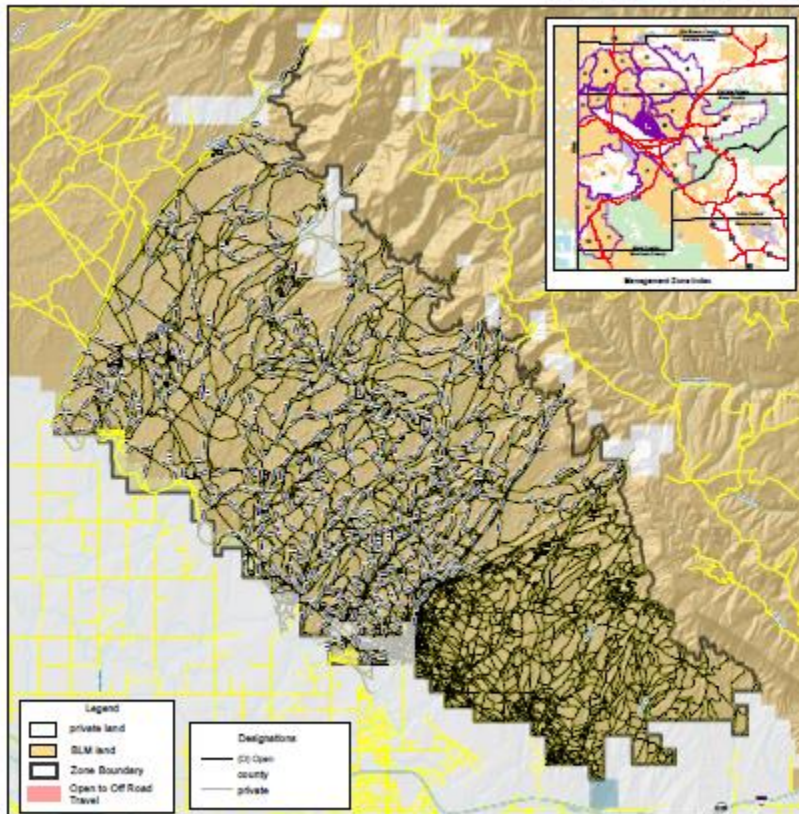


# Route Designation Process

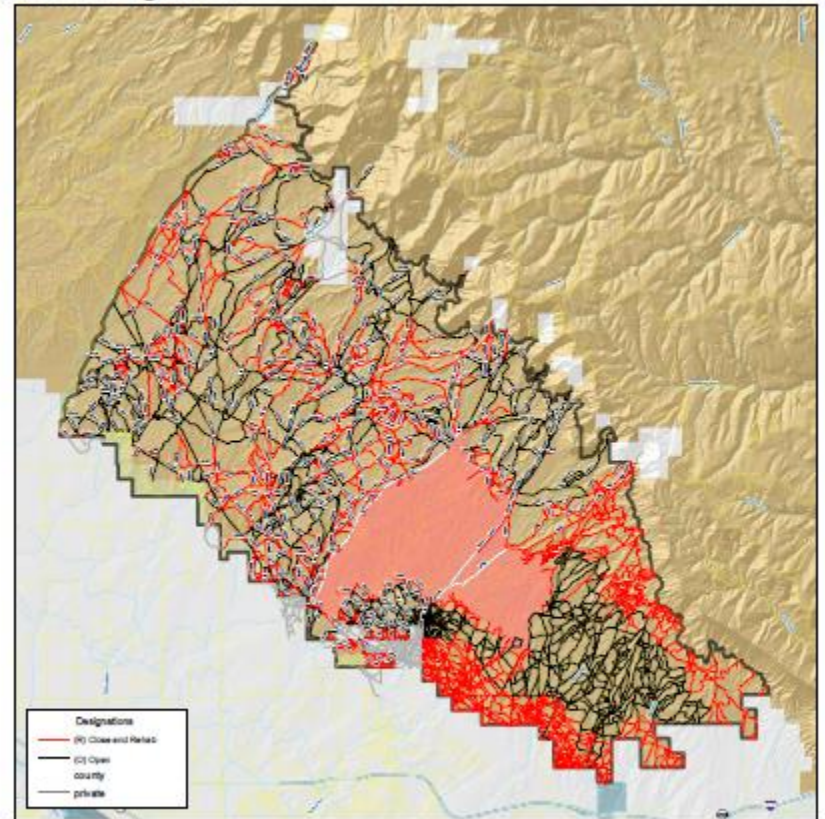
- Factors to consider: what does this mean?
  - Two zones—North Desert and Gateway area—contribute a substantial number of the overall routes. Areas where we want to maintain access but have resource concerns with density of routes.
  - County roads not counted in the total
  - Not all roads/trails currently accessible to motorized
  - Ask these questions, examine/analyze data, and provide meaningful numbers to allow good discussion prior to upcoming travel meetings.



## Zone L: North Desert: Current Situation (left) and Preferred (Right)



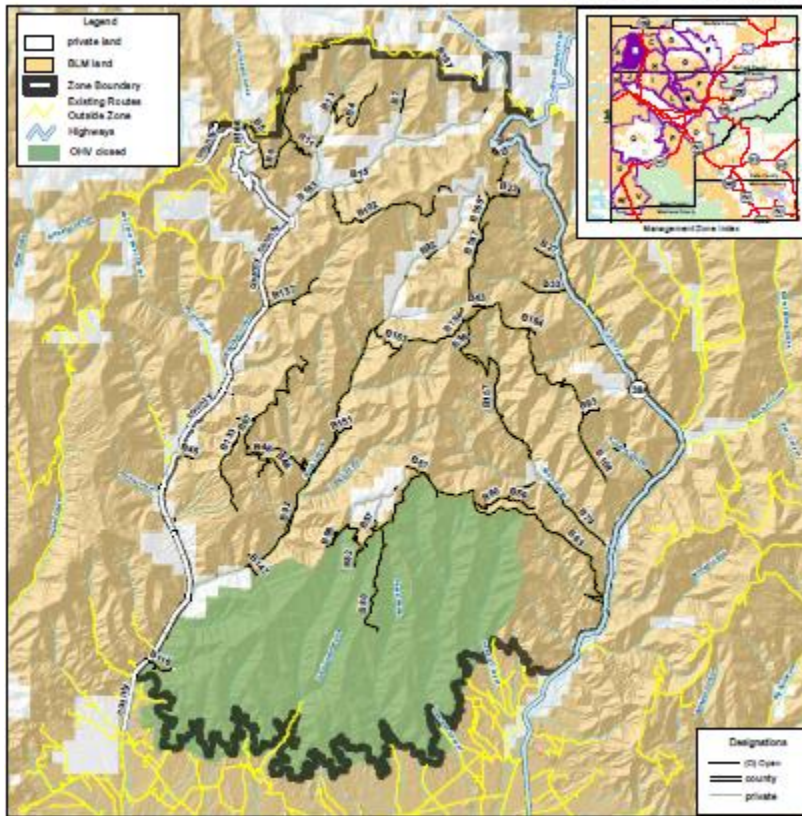
Alternative A



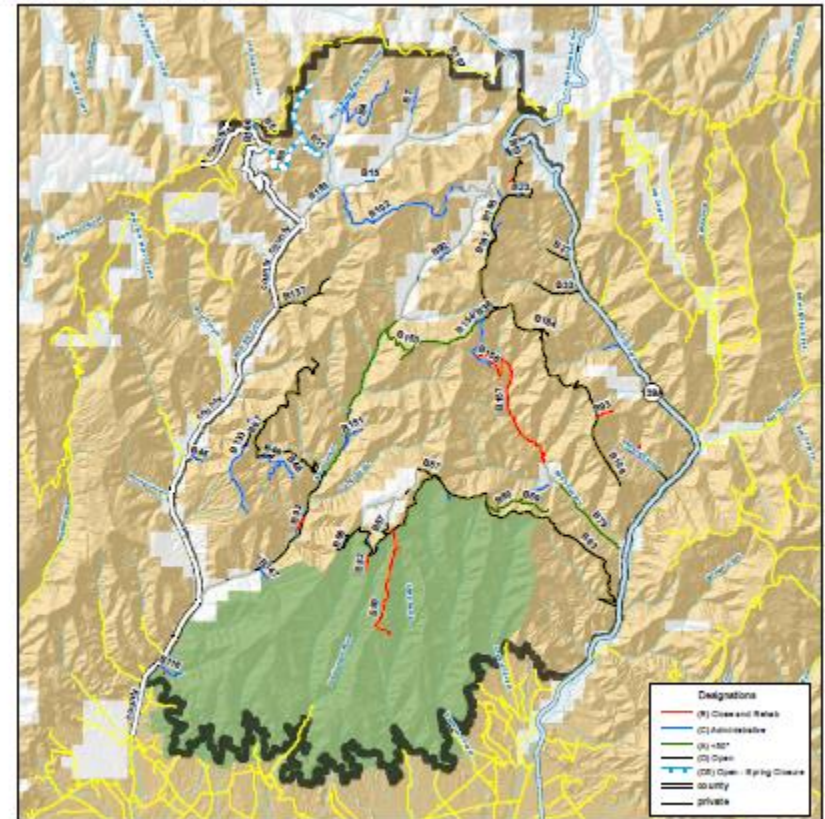
Alternative B



## Zone B: North of Mack (Bookcliffs): Current Situation (left) and Preferred (Right)



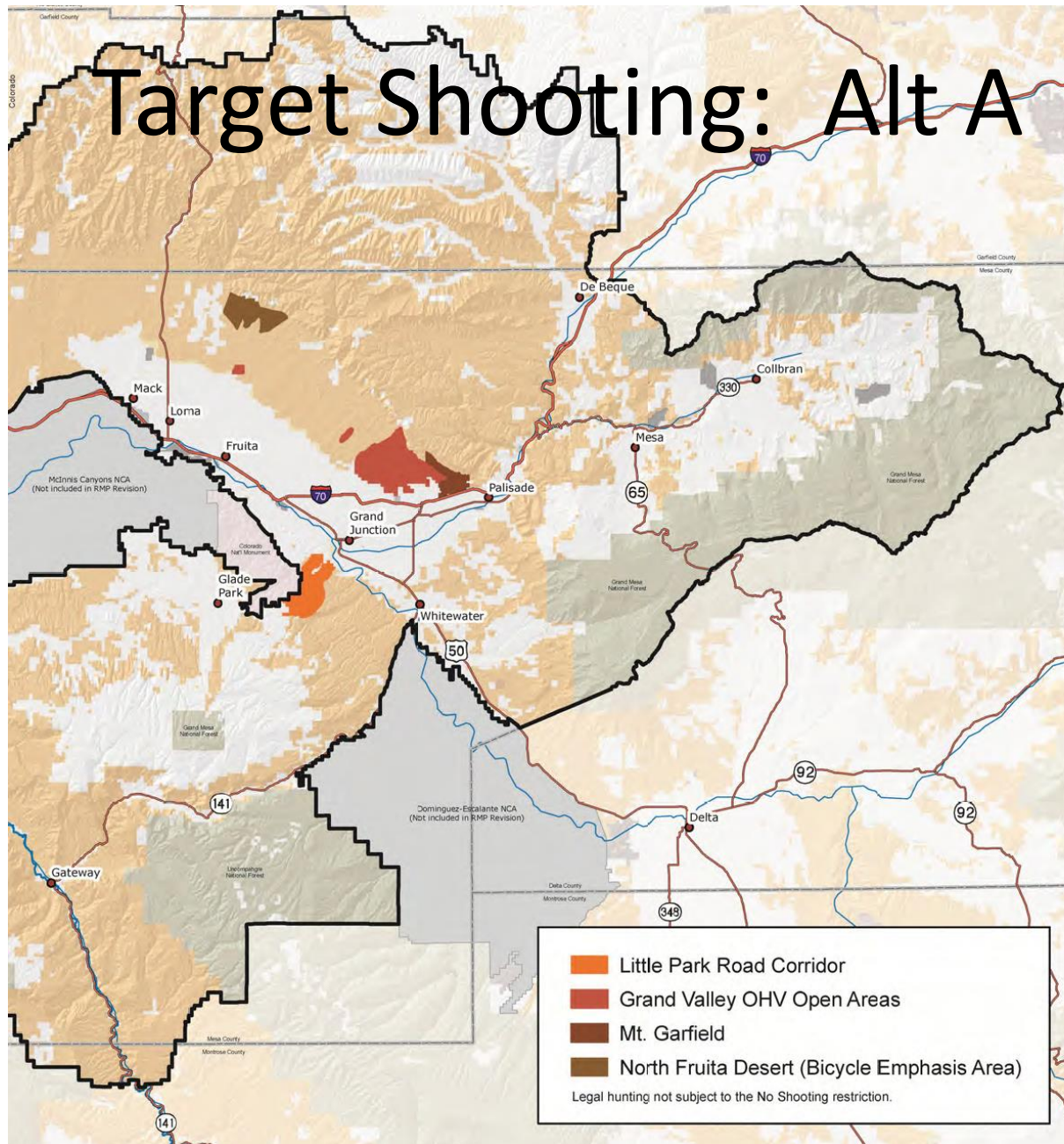
Alternative A



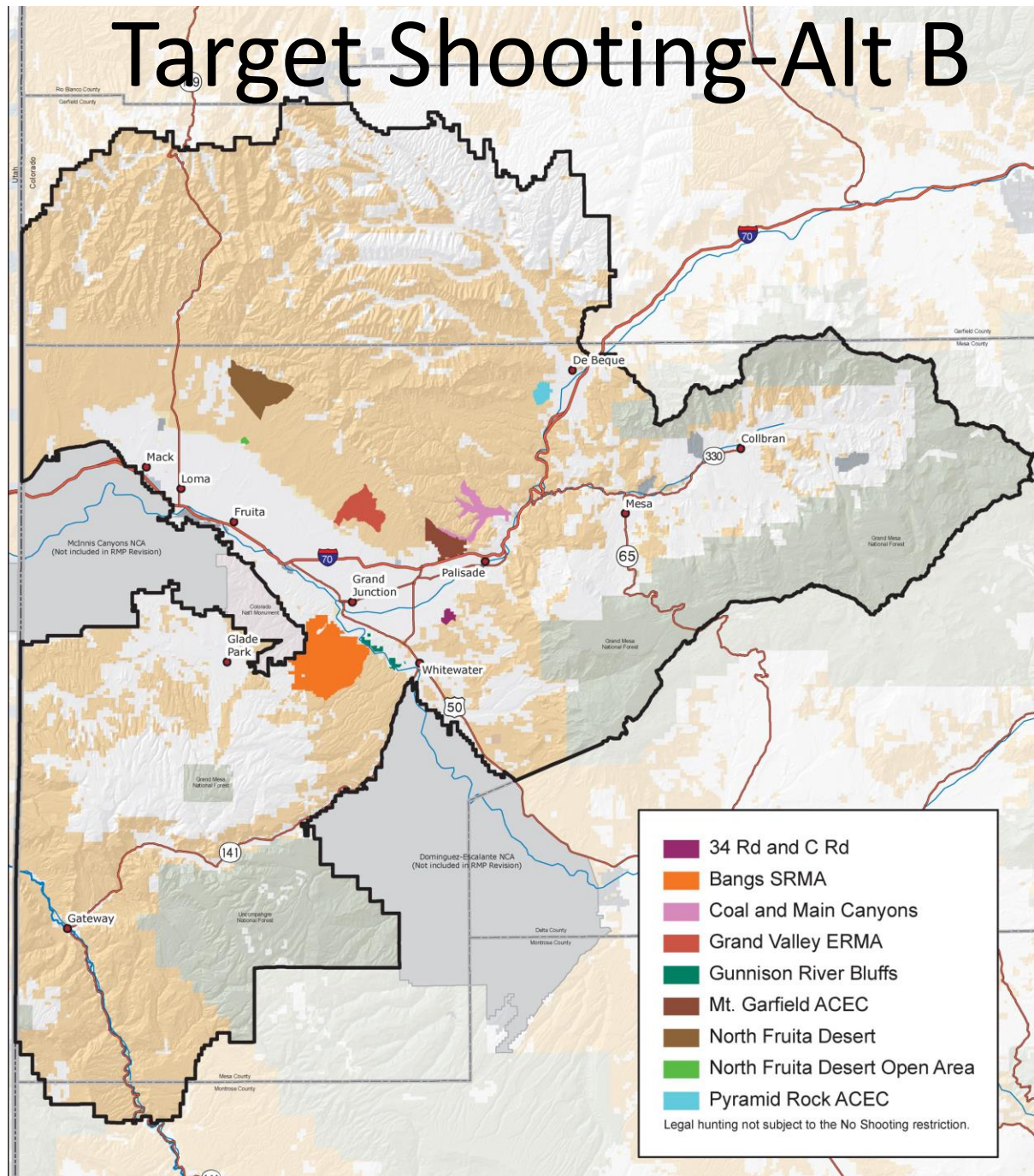
Alternative B



# Target Shooting: Alt A



# Target Shooting-Alt B





# Grazing Allocations

	<b>Alt A Current</b>	<b>Alt B Preferred</b>	<b>Alt C</b>	<b>Alt D</b>
Acres Open for Grazing	978,600	961,100	586,600	977,200
Acres unavailable for grazing	48,600	66,000	440,400	49,900

Under Alternative B, only currently unused allotments would be closed. These are small allotments difficult for permittees and BLM to manage.

Alternative C would close these small, difficult-to-manage allotments along with low elevation desert allotments.

An alternative that proposed to make all BLM-administered lands within the planning area unavailable for livestock grazing was also considered but dismissed from detailed analysis because it was not necessary. BLM has considerable discretion through its grazing regulations to determine and adjust stocking levels, seasons of use, and grazing management activities and to allocate forage to uses of the public lands in RMPs.



# **DRMP Public Comment Period**

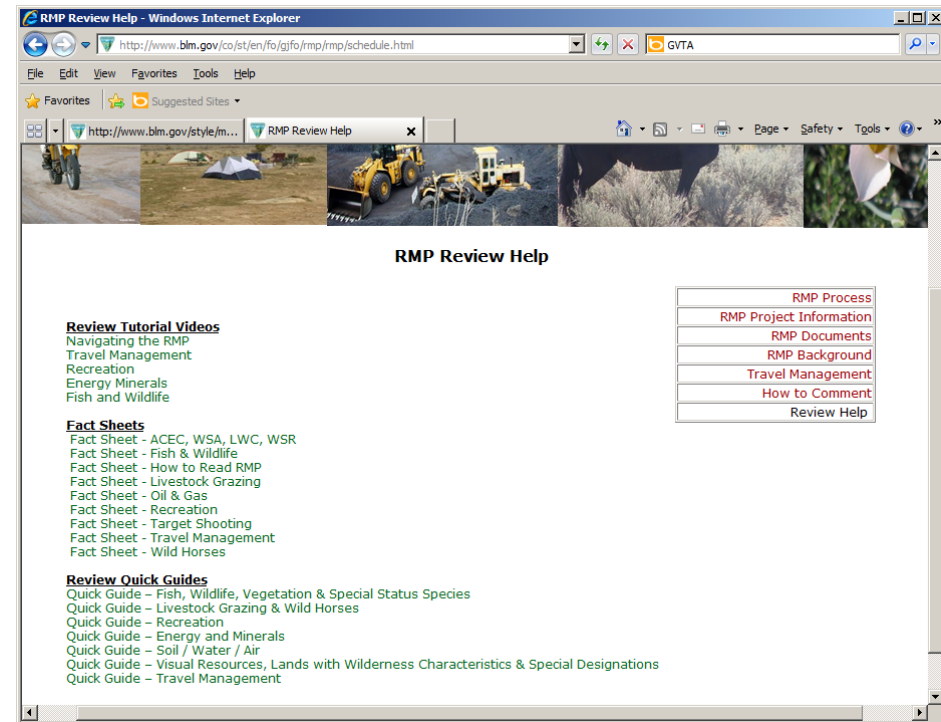
- 
- The background of the slide is a photograph of an oil drilling rig in a snowy, mountainous landscape. The rig is a tall, white structure with a red platform at the top. It is surrounded by snow-covered ground and mountains in the background. The sky is blue with some light clouds. The sun is visible in the upper right corner, creating a lens flare effect.
- **Draft RMP/EIS available for 90 day public comment period  
Until April 25, 2013**
  - **Comments will help us to develop the Proposed RMP/Final EIS  
- PRMP will mix and match from all 4 alternatives**
  - **30 day protest period on PRMP late 2013/early 2014**
  - **Record of Decision and Approved RMP Late 2014**





# Document Navigation

- All documents are available at libraries and on our website <http://www.blm.gov/co/st/en/fo/gjfo/rmp/rmp.html>
- Review Help section of website:
  - Tutorial Videos
  - Fact Sheets
  - Review Quick-guides





# How to Comment:

- You may submit your comments

By email: [gjfo\\_rmp@blm.gov](mailto:gjfo_rmp@blm.gov)

By fax: 970-244-3083

By mail: BLM – GJFO RMP, 2815 H Road, Grand Junction, CO, 81506

In writing at Open Houses (forms at welcome table)



- We need comments that not only state a preference for certain management actions in the alternatives, but also include your reasons for that preference.
- Tell us what you think of specific aspects of the alternatives – and why.





# Discussion topics

- Process Questions:
  - Travel Management: how best to communicate, extra comment period after final (?), working with groups
  - Shooting: suggestions on addressing “no closures anywhere for any reason”